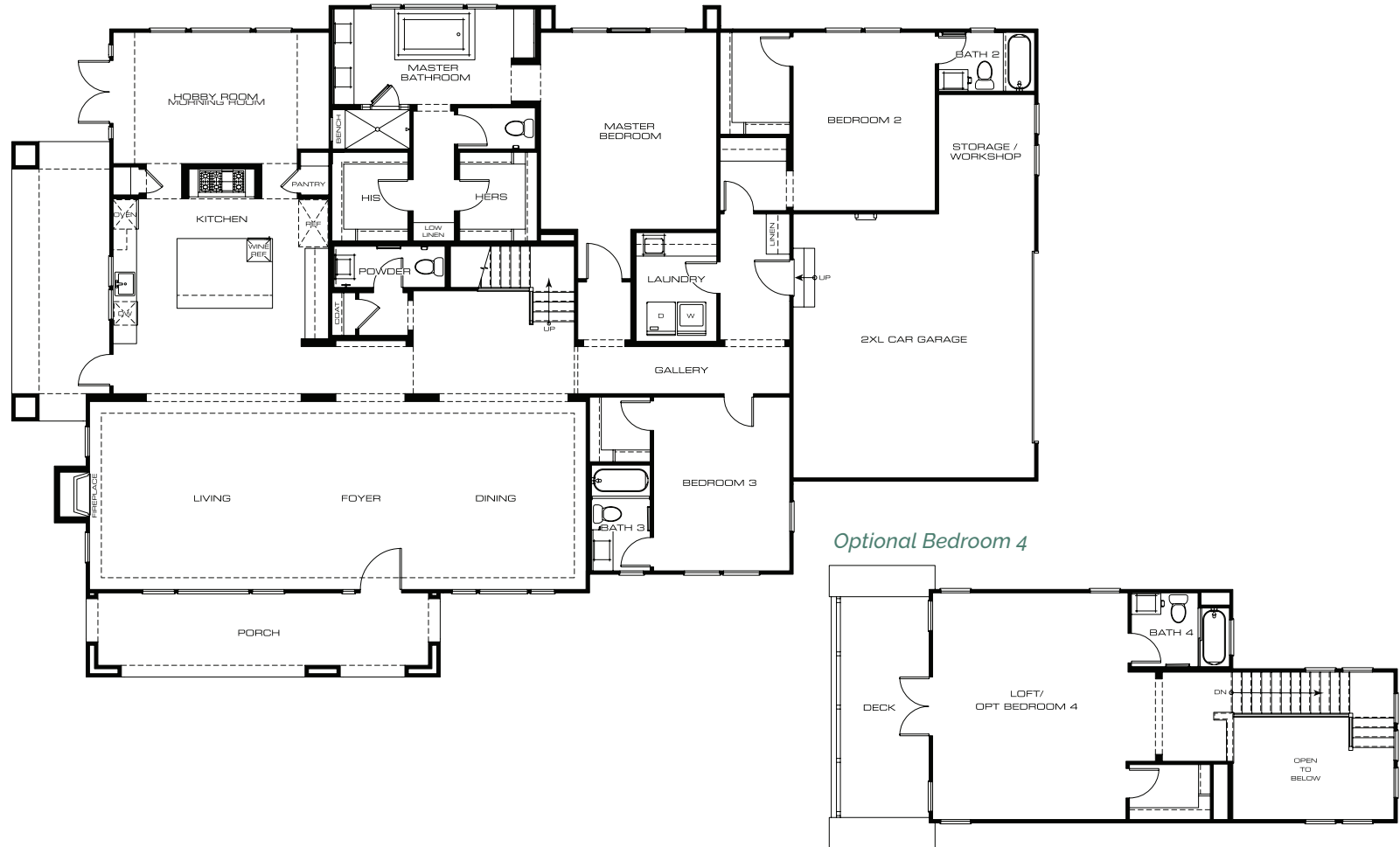


RESIDENCE
four

3,590 Sq. Ft. | 3 ensuite Bedrooms + Loft | 4.5 Baths | 2 XL garage | *Optional Bedroom 4*

first floor



CityMark reserves the right to make modifications in plans, exterior designs, prices, materials and specifications at any time without notice. All dimensions and square footages are approximate and some features may vary per residence. Maps, photographs, renderings and landscaping are all illustrative and conceptual.

CLASSIC CONTEMPORARY | 3,590 Sq. Ft. | 3 ensuite Bedrooms + Loft | 4.5 Baths | 2 XL garage | *Optional Bedroom 4*

features

CLASSIC CONTEMPORARY

- Great Room concept that opens the expanse of the home from Kitchen, Dining and Living areas to the outdoors
- Generous covered patio off the Kitchen
- Custom wood rancho house garage door

GOURMET KITCHENS

- GE Monogram professional grade stainless steel appliances
 - Convection double oven with Advantium technology
 - Professional cooktop
 - Drawer microwave
 - Wine refrigerator
 - Dishwasher
- Chimney-style stainless steel hood
- Quartz slab countertops with full tile backsplash
- Shaker style cabinets in custom colors
- Custom designed island for easy entertaining
- Cast iron farmhouse apron front sink
- Moen "Align" stainless steel pull-out faucet
- Extra deep pots and pans drawers for easy access to cooktop
- LED task Lighting
- Dual walk-in pantry
- "Keydrop" cabinet by garage entry to home

MASTER SUITE

- Oversized Master Bedroom and Bathroom Suite
- Quartz countertops and double sinks and vanity
- Kohler free-standing soaking tub
- Walk-in showers with semi-frameless glass enclosure, shower seat, and oversize niche
- Moen "Align" polished chrome plumbing fixtures
- His and Her walk-in closets

INTERIOR DETAIL

- Gas Heat-n-Glow contemporary fireplace
- Morning Room
- Air conditioning
- Moen "Align" and "Gibson" polished chrome fixtures
- Living Room area pre-wired for a flat-screen TV and surround sound
- Quartz countertops in Secondary Baths and Laundry Room
- Pre-wired for chandelier in Dining Room
- Spacious Laundry Room with utility sink
- Solid core, shaker panel interior doors
- Pre-wired for ceiling fans in Living Room and Bedrooms
- Elegant interior lever door handles in polished chrome finish
- Contemporary 5" base molding
- High-speed CAT 5 and RG6 data wiring
- Level 4 drywall finish
- LED Recessed lighting
- Toto toilets

GREEN LIVING

- Low "E" dual glazed windows
- Low energy use lighting
- Cool roof
- Community storm water detention system
- Tankless water heater
- Porous paver driveway
- Pre-plumbed for solar power
- Pre-plumbed for grey water treatment system
- Pre-wired for car charging station

CityMark reserves the right to make modifications in plans, exterior designs, prices, materials and specifications at any time without notice. All dimensions and square footages are approximate and some features may vary per residence. Maps, photographs, renderings and landscaping are all illustrative and conceptual.