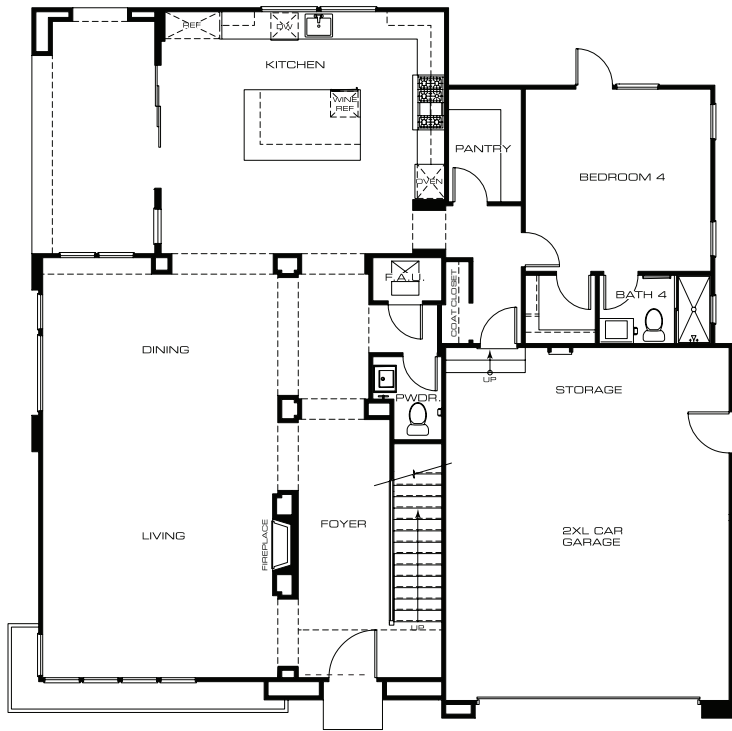
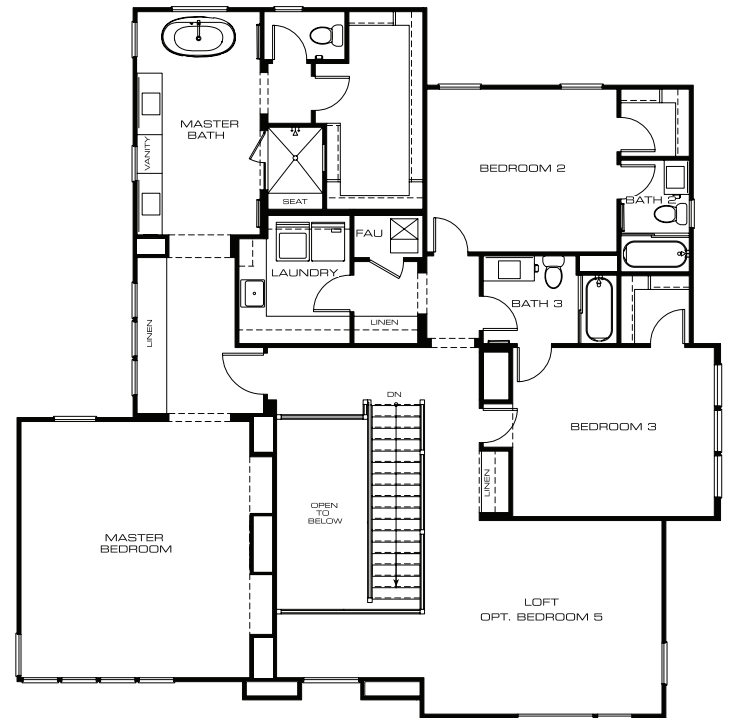


CALIFORNIA CONTEMPORARY | 3,746 Sq. Ft. | 4 Bedrooms + Loft | 4.5 Baths | 2 XL garage | *Optional Bedroom 5*

first floor



second floor



CityMark reserves the right to make modifications in plans, exterior designs, prices, materials and specifications at any time without notice. All dimensions and square footages are approximate and some features may vary per residence. Maps, photographs, renderings and landscaping are all illustrative and conceptual.



3,746 Sq. Ft. | 4 Bedrooms + Loft | 4.5 Baths | 2 XL garage | *Optional Bedroom 5*

features

CALIFORNIA CONTEMPORARY

- The oversized glass sliding door system naturally extends the Kitchen to the outdoors
- First level Bedroom Suite with private access
- Spacious upstairs Loft
- Custom wood rancho house garage door

GOURMET KITCHENS

- GE Monogram professional grade stainless steel appliances
 - Convection double oven with Advantium technology
 - Professional cooktop
 - Drawer microwave
 - Wine refrigerator
 - Dishwasher
- Quartz slab countertops with full tile backsplash
- Shaker style cabinets in custom colors
- Custom designed island for easy entertaining
- Moen "Align" stainless steel pull-out faucet
- Extra deep pots and pans drawers for easy access to cooktop
- LED task Lighting
- Walk-in pantry

MASTER SUITE

- Oversized Master Bedroom with pitched ceiling
- Quartz countertops and double sinks and vanity
- Kohler free-standing soaking tub
- Walk-in shower with semi-frameless glass enclosure, shower seat, and oversize niche
- Moen "Align" polished chrome plumbing fixtures
- Spacious walk-in closet

INTERIOR DETAIL

- Gas Heat-n-Glow contemporary fireplace
- Air conditioning
- Moen "Align" and "Gibson" polished chrome fixtures
- Living Room area pre-wired for a flat-screen TV and surround sound
- Quartz countertops in Secondary Baths and Laundry Room
- Pre-wired for chandelier in Dining Room
- Spacious 2nd level Laundry Room with utility sink
- Solid core, shaker panel interior wardrobe doors
- Pre-wired for ceiling fans in Living Room and Bedrooms
- Elegant interior lever door handles in polished chrome finish
- Contemporary 5" base molding
- High-speed CAT 5 and RG6 data wiring
- Level 4 drywall finish
- LED recessed lighting
- Toto toilets

GREEN LIVING

- Low "E" dual glazed windows
- Low energy use lighting
- Cool roof
- Community storm water detention system
- Tankless water heater
- Porous paver driveway
- Pre-plumbed for solar power
- Pre-plumbed for grey water treatment system
- Pre-Wired for car charging station

CityMark reserves the right to make modifications in plans, exterior designs, prices, materials and specifications at any time without notice. All dimensions and square footages are approximate and some features may vary per residence. Maps, photographs, renderings and landscaping are all illustrative and conceptual.